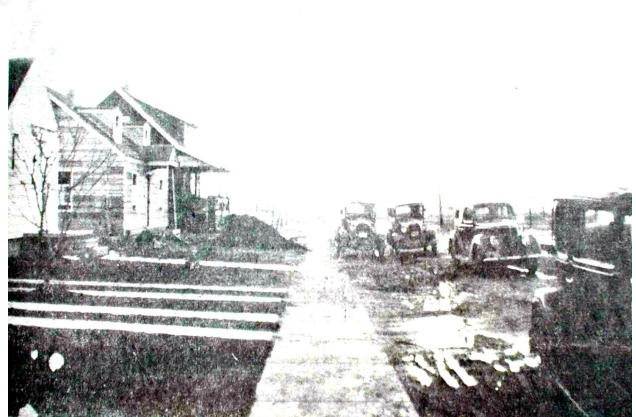


The first school in Center Line District No. 2, of Warren Township. Picture taken around 1900. The 'rest' rooms stand to the left. The school was on the N. E. corner of what is now Sherwood at Ten Mile Road. Note spelling 'Centreline'. It was in here that Mortimer W. Plunkett taught alone for many years. The building was replaced in 1921 by the first Busch School which since, has had several additions.



NOT SO LONG AGO—This view of Slate Park street, looking toward Van Dyke, was taken in 1939 when the Slate Park Subdivision was new. All was wide open spaces then, but today a car lot and a block of stores lies on either side of the street's end. The picture was loaned by Mrs. Mary Pearch of 8050 Slate Park.

